

Chilli Bean & Lime Soup 5 (2.4) kg - Frozen

Chilli Bean & Lime Soup 5x

PRODUCT DESCRIPTION

Cooked frozen tomato, vegetable and bean soup with chilli and lime

Brand	Projuice
Manufacturer Product Code	PRCHI502
Product Type	Food
Product Category	Soup
Storage Type	Frozen
Specification Type	Generic
Inner Pack GTIN	5056702907081
Outer Case GTIN	15056702907088



INGREDIENTS

Ingredient Declaration

Water, Chopped Tomato, Onion, Green Pepper, Blackeye Beans (5%), Desiccated Coconut, Tomato Paste, Rapeseed Oil, Concentrated Lime Juice, Vegetable Stock [Salt, Dried Glucose Syrup, Maltodextrin, Yeast Extract, Sugar, Natural Flavouring, Dried Carrot, Tomato Powder, Onion Powder, **CELERY** Powder, Bay, Garlic Powder, Black Pepper], Garlic Puree, Chopped Coriander, Red Chilli (0.4%), Cumin Powder, Maize Starch, Salt, Vegetable Boullion [Vegetable Stock (Water, Onion, Carrot Extract, Tomato, Celeriac (**CELERY**), Herbs, Garlic, Spice), Salt, Glucose Syrup, Maltodextrin, Yeast Extracts, Sugar, Flavourings, Rapeseed Oil], Chipotle Chilli Flake (0.1%), Black Pepper.

ALLERGENS

Product Contains:

Celery/Celeriac	Yes	Mustard	No
Cereals Containing Gluten	No	Nuts (Tree)	No
Barley	No	Almond nuts	No
Oats	No	Brazil nuts	No
Rye	No	Cashew nuts	No
Wheat (including Spelt and Khorasan)	No	Hazelnuts	No
Crustacea	No	Macadamia (Queensland) nuts	No
Eggs	No	Pecan nuts	No
Fish	No	Pistachio nuts	No
Lupin	No	Walnuts	No
Milk	No	Peanuts	No
Molluscs	No	Sesame Seeds	No
		Soybeans	No
		Sulphur Dioxide and Sulphites	No

SUPPLEMENTARY
INGREDIENT
INFORMATION

Palm Oil	No
Hydrogenated Vegetable Oil/Fat	No
GM Protein/DNA	No

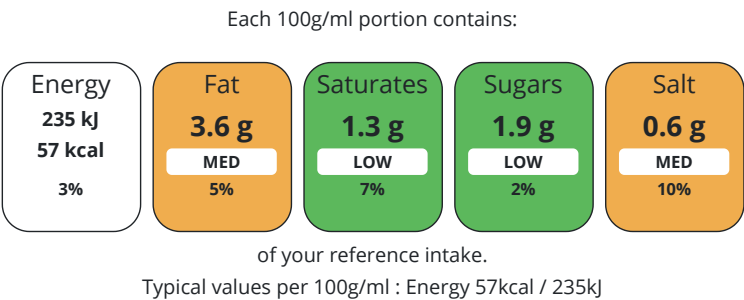
ADDITIVES

Product Contains:			
Artificial Antioxidants	No	Artificial Flavourings	No
Artificial Colours	No	Artificial Preservatives	No
Artificial Flavour Enhancers	No	Artificial Sweeteners	No

DIET SUITABILITY

Vegan Diet	Suitable for	Vegetarian Diet	Suitable for
Halal Diet	No	Kosher Diet	No

NUTRITIONAL
INFORMATION AS
SOLD



Nutrient	per 100g	RI per 100g
Energy (kJ)	235 kJ	3%
Energy (kcal)	57 kcal	3%
Fat	3.6 g	5%
of which Saturates	1.3 g	7%
Carbohydrate	3.6 g	1%
of which Sugars	1.9 g	2%
Fibre	1.4 g	
Protein	1.2 g	2%
Salt	0.6 g	10%

Source of Nutritional Information Calculation from known/accepted datasets

SUPPLEMENTARY
NUTRITIONAL
INFORMATION

Fibre Type	Fibre AOAC
------------	------------

HANDLING &
STORAGE
INFORMATION

Directions For Use	
Thoroughly defrost in a refrigerator before use. Serve hot. Hob: (4- 5 mins per 400g serving). Remove contents from packaging. Place into a saucepan. Heat until piping hot. Stir occasionally; do not boil. MICROWAVE: (800W) 2 ½ mins; (900W) 2 mins. (Based on portion size of 400g). Remove contents from packaging. Place into non metallic container. Cover. Heat on full power. Timings may vary according to oven power and potion size. Heat until piping hot.	
Storage Instructions	
Keep frozen at minus 18C or colder. Once thawed, keep chilled (0C to +5) use within 14 days. Once opened, keep chilled (0C to +5C), use within 3 days and by date shown on label.	
Storage Instructions After Opening	
Keep chilled (0C to +5C)	
Shelf Life from Time of Production	365 Days
Shelf Life From Opening	3 Days
Shelf Life Once Defrosted	14 Days

ACCREDITATIONS/
CERTIFICATIONS/
ASSURANCE
SCHEMES
ORIGIN

SALSA (Safe & Local Supplier Approval)

Product Country of OriginUnited Kingdom

Additional Origin Details

N/A

Origin of the Primary IngredientGreat Britain

PRODUCT
CHARACTERISTICS

Standards Testing

Do you undertake trend analysis of microbiological results?Yes

Is shelf life testing undertaken?Yes
Commercially SterileNo

Microbiological Standards

Organism	Description	Frequency	Target	Maximum	Sample (g or ml)
Total Viable Count (TVC) (cfu/g or ml)		Annually	<10000	10000000	1
Enterobacteriaceae (cfu/g or ml)		Annually	<100	10000	1
E. Coli (cfu/g or ml)		Annually	<20	100	1
Staphylococcus Aureus (cfu/g or ml)		Annually	<20	10000	1
Salmonella (cfu/g or ml)		Annually	<0	10	1
Bacillus Cereus (cfu/g or ml)		Annually	<1000	100000	1
Listeria Monocytogenes (cfu/g or ml)		Annually	<0	10	1
Clostridium Perfringens (cfu/g or ml)		Annually	<10	10000	1

Physical Standards

Test	Description	Frequency	Target	Range	Sample (g or ml)
Weight (g)		Every Batch	>2400	2400 to 2640	2400

SUPPLEMENTARY INFORMATION

Milk TypeCowPasteurisedYes

HAZARD CONTROLS

Metal DetectionYes

CONFIGURATION

Case ConfigurationInner Pack Configuration

Total Quantity of Inner Components in Outer Case5 Units

Total Quantity of Inner Packs in Outer Case5 Units

Is the Outer Case Splittable?Yes

PRODUCT
WEIGHTS

Inner Component

Inner Pack

Inner Pack Gross Weight2413 g

Inner Pack Net Weight2400 g

Outer Case

Outer Case Gross Weight12.41 kg

Outer Case Net Weight12 kg

PRODUCT
DIMENSIONS

Inner Component

Inner Pack

Inner Pack Depth	350 mm
Inner Pack Width	250 mm
Inner Pack Height	50 mm

Outer Case

Outer Case Depth	325 mm
Outer Case Width	235 mm
Outer Case Height	305 mm

PACKAGING

Inner Pack Packaging

Type	Materials	Weight	Recycled Plastic %	Recyclable	Returnable	Composite
Pouch	Plastic	60 g	- %	Yes	No	
Label	Paper/Cardboard	5 g	- %	Yes	No	

Outer Case Packaging

Type	Materials	Weight	Recycled Plastic %	Recyclable	Returnable	Composite
Case	Paper/Cardboard	347 g	- %	Yes	No	
Label	Paper/Cardboard	1 g	- %	Yes	No	

Transport Packaging

Type	Materials	Weight	Recycled Plastic %	Recyclable	Returnable	Composite
Other	Plastic	1500 g	100.00 %			
Other	Paper/Cardboard	750 g	- %			
Other	Wood	25000 g	- %			

MARKETING
INFORMATION

Marketing Description

Cooked frozen tomato, vegetable and bean soup with green peppers and creamy coconut infused with chilli and lime

